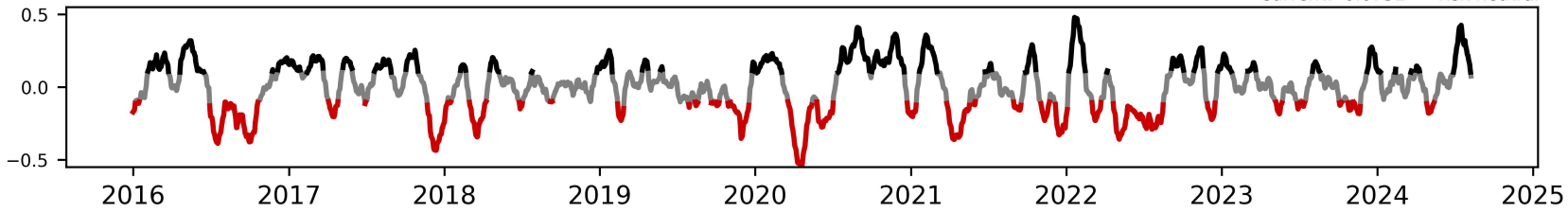


# Daily Flows

## iFlow Mood

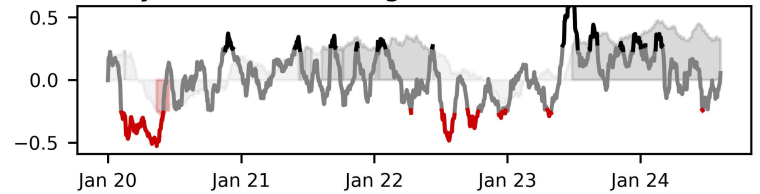
Current: 0.0751 → risk neutral



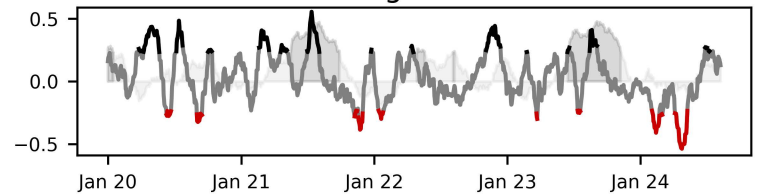
iFlow Mood is the difference between global equity flows & core (Canada, France, Germany, Japan, Switzerland, US, UK) short duration flows

Regimes: **risk on (Mood > 0.1)** **neutral (-0.1 < Mood < 0.1)** **risk off (Mood < -0.1)**

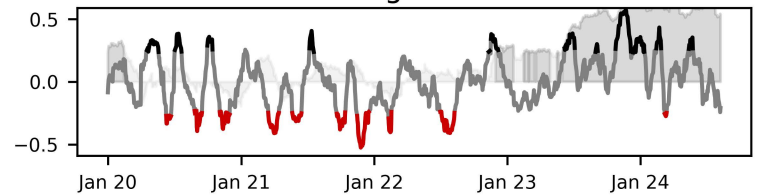
## Carry Flows & Holdings



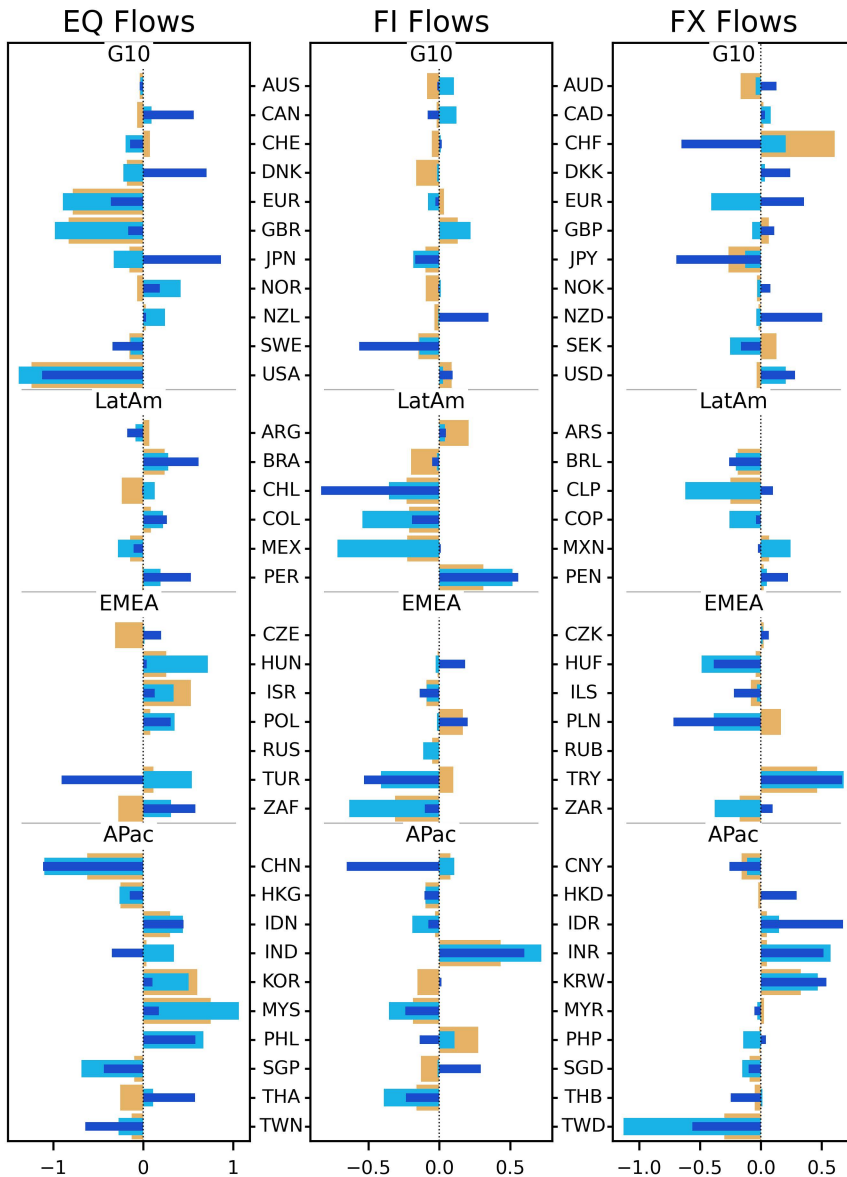
## Trend Flows & Holdings



## Value Flows & Holdings



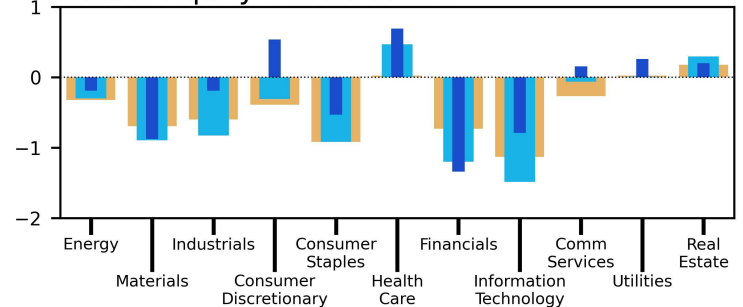
Carry, Trend and Value signals are Spearman rank correlations between 20d flow or holdings & 5y yields, 50d / 200d momentum, & 1m / 3y average BIS Broad REER, respectively



- Bar charts: average flow over last **1 week** **1 month** **3 months**
- DM Amer: Canada, United States
- DM EMEA: Austria, Belgium, Denmark, Finland, France, Germany, Ireland, Israel, Italy, Netherlands, Norway, Portugal, Spain, Sweden, Switzerland, United Kingdom
- DM APac: Australia, Hong Kong, Japan, New Zealand, Singapore
- EM Amer: Argentina, Brazil, Chile, Colombia, Mexico, Peru
- EM EMEA: Czech Rep, Egypt, Greece, Hungary, Kuwait, Poland, Qatar, Russia, Saudi Arabia, South Africa, Turkey, United Arab Emirates
- EM APac: China, India, Indonesia, Korea, Malaysia, Pakistan, Philippines, Taiwan, Thailand

Sources: Bank of New York Mellon, MSCI, WM/Refinitiv  
Data as of 2024-08-08

## Global Equity Sector Flows



## Regional Equity Flows

